

Mitchell B. Goldberg

Partner

P: 312.924.4263 F: 312.372.2389 E: mgoldberg@LKSU.com

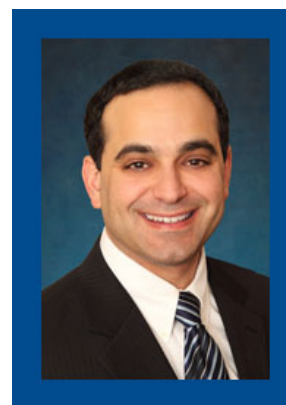
Mitchell B. Goldberg, who started with Lawrence Kamin in 2001, focuses his practice on commercial litigation, concentrating in securities and commodity futures law and alternative dispute resolution. He is also a trained mediator.

His reputation for keeping the “big picture” in mind, rather than focusing solely on the individual case or issue before him, recently helped a large client with multiple FINRA arbitration claims that all had the same arbitrator as a panelist, but were not all represented by Lawrence Kamin. When that panelist ruled negatively in Mitch’s case, Mitch contemplated bringing a motion to strike the arbitrator under FINRA guidelines prohibiting panelists from serving on multiple cases involving the same respondents. Even though this would have substantially advanced his own case, he instead suggested a conference call with all of the client’s outside attorneys handling the remaining arbitrations to determine a joint strategy that would provide the biggest benefit to the mutual client. Ultimately the motion to strike was successfully brought in the case most likely to benefit.

He is also well-respected for his integrity, honesty and candor, which have earned him the trust of many judges and opposing counsel. This strength has often allowed Mr. Goldberg to achieve consensus in cases where other people wouldn’t be able to achieve an agreement. For example, in one matter, distrust among the attorneys and parties resulted in a refusal of the plaintiffs to even discuss settlement. Mitch stepped in and, due to the opposing attorney’s mutual respect, helped negotiate a settlement satisfactory to both sides.

Mitch’s active membership on the boards of various legal committees and law societies, including the Chicago Bar Association and the Decalogue Society of Lawyers, reinforces his intent to continually improve the legal profession, as well as his desire to provide the best possible guidance to clients by keeping abreast of the latest developments in the law. Mitch has lectured to the Decalogue Society of Lawyers and taught securities litigation at IIT’s Chicago-Kent College of Law with other members of the firm.

When not working for clients, serving on various boards or teaching, Mitch loves spending time with his wife Natasha and their three beautiful children, Rachel, Zachary and Jesse.



Practice Areas

Alternative Dispute Resolution
Litigation
Securities

Experience

Lawrence, Kamin, Saunders & Uhlenhop LLC
Partner: 2007-Present
Associate: 2001-2007
Blau & Bonavich, 1999-2001

Education

DePaul University, J.D., with honor, 1999
Order of the Coif
DePaul University, B.A., highest honor, 1996

Honors

2008 – 2010 and 2012
Rising Star in Securities Litigation,
Super Lawyers Magazine
2011 Decalogue Award of Excellence
2011 DePaul 14 under 40

Bar Admissions

State of Illinois

Court Admissions

United States District Courts
Northern District of Illinois
Seventh Circuit Court of Appeals

Professional Memberships & Affiliations

Illinois Bar Association
Chicago Bar Association
Co-Chair, ADR Committee, 2005-2007
Chicago Lincoln Inn of Court
Pupilage Co-Chair, 2006-2010
National Inns of Court
Illinois State Liaison, 2009-Present
Decalogue Society of Lawyers
Board of Managers, 2006-Present
DePaul University College of Liberal Arts &
Sciences Deans Advisory Board, Vice Chair
2010 to present